



• **FRP BLAST GATE DAMPERS**

Corrosion resistant FRP dampers are a perfect addition to your new or existing duct system. They provide excellent performance and long service life. The FRP composite eliminates normal maintenance and provides worry free operation.

As a leading manufacturer and fabricator of fiberglass reinforced plastic products for over 20 years, we have designed our blast gate damper as an economical alternative for air duct systems requiring simple direction / volume control. This gate is not designed or intended for sophisticated application which require minimum leakage for positive closure. These are well suited for use in most corrosive environments, which include waste-water treatment plants, pharmaceutical facilities, pulp & paper mills and chemical plants.

FRP construction provides excellent corrosion resistance in most industrial and commercial environments. Standard construction utilizes a vinyl ester resin and a 50 mil internal corrosion barrier. Laminate construction can be custom tailored to suit your specific application.

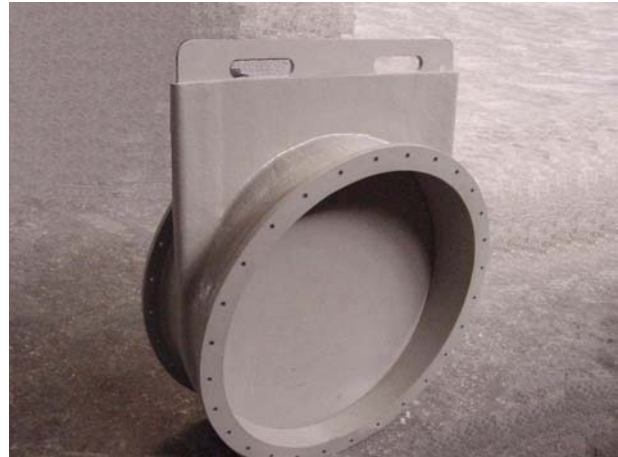
*Call the factory for pricing and availability.*

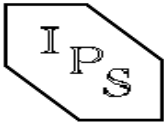
• **Features include**

- Excellent corrosion resistance.
- Economical, initial cost is typically lower than comparable stainless steel models, yet provides superior performance and service life.
- Strong and lightweight
- Electrically non-conductive
- Thermally non-conductive
- Easy installation. Our standard blast gate damper can be provided with plain ends for butt & strap welding into the duct or with flanged ends per ASTM D-3982 & NBS PS 15-69, Table 2. Other flange drilling types can be provided.

An economical option is to fabricate our damper directly into duct spools. This option is available for projects only. Eliminating two pair of flanges significantly lowers cost.

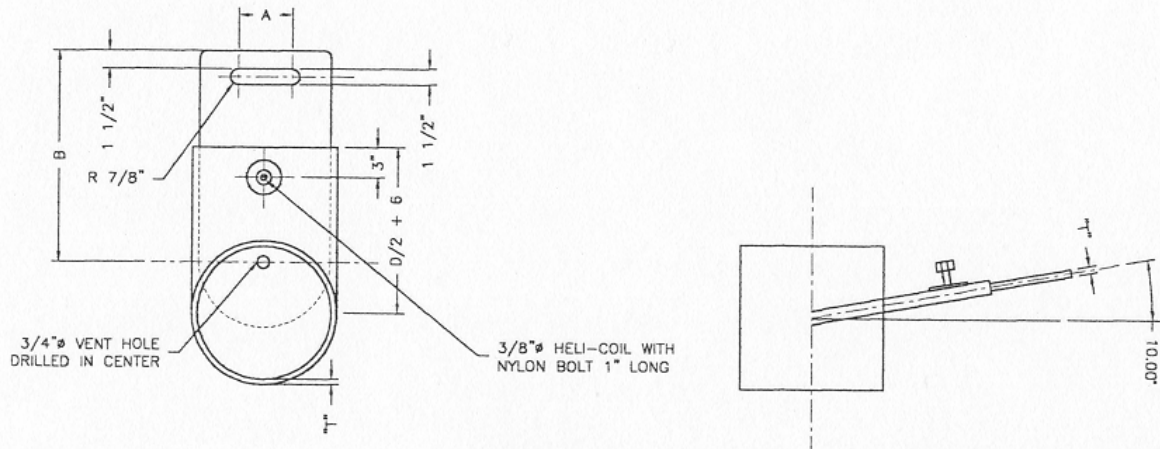
CALL THE FACTORY FOR PRICING, OPTIONS, AND AVAILABILITY.





BLAST GATE DIMS.			
DIA "D"	A	B	T
4"	1 1/2"	13"	1/4"
6"	3"	15"	1/4"
8"	4"	17"	1/4"
10"	5"	19"	3/8"
12"	6"	21"	3/8"
14"	6"	23"	3/8"
16"	6"	25"	3/8"
18"	6"	27"	3/8"
20"	6"	29"	3/8"
24"	6"	33"	3/8"
30"	6"	39"	3/8"

- NOTES:  
1. THICKNESS "T" SHALL BE TO MATCH DUCTWORK  
2. MATERIAL OF CONSTRUCTION SHALL MATCH DUCTWORK



BLADE DETAIL  
SCALE: NTS